

**111112 FUAMO2TC3D5FI50**

## Designation

FUAMO2TC3D5FI50 – Modular 3-pole Type 2+3 surge protective device (SPD).

## Application

### Tertiary & industrial buildings, administrative buildings

The FUAMO2TC3D5FI50 (code 111112) SPD is designed to protect 3-pole electrical installations. The short-circuit current must remain below 50kA in a TT or TN earthing system. This SPD system is to be installed after the main circuit-breaker at the busbar upstream from the electrical installation. The SPD cartridges include a fuse: therefore, the installation of an associated disconnecter is not required.

In compliance with the NFC15-100, this SPD must be installed downstream from a residual current operated circuit-breaker in TT earthing system.



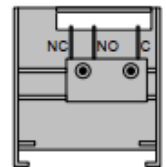
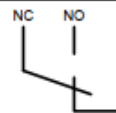
## Description

Avalanche Breakdown-diode based 3-pole surge protective device delivered prewired with integrated disconnectors.

## Technical specifications

- Width : 108mm (6 modules) ;
- Weight : 0.75kg;
- Max steady-state voltage  $U_c$  : 275V.
- Compatible earthing systems: TT, TN.
- Voltage protection level  $U_p$  L/PE : 0.75kV
- Nominal discharge current  $I_n$  : 5kA (8/20, unlimited number of shocks)
- Compliance with NFEN61643-11, IEC1643-11 Ed 1.0. Type 2+3 standards
- Integrated disconnecter (20AgG fuse)
- Short-circuit current rating  $I_{scrr}$  : 50kA rms
- Shut-down support with remote signal contact (in case of absence or disconnection of the cartridge)
- Mechanical visual signal on the cartridge in End-of-Life.

Raccordement option TS :



## Product description

Type 2+3 SPD for the protection against overvoltage surges for 3-pole power supply, operating voltage 275V, voltage protection level  $U_p$  0.75kV, Zener-diode technology, nominal discharge current  $I_n$  5kA, unlimited number of shocks at  $I_n$ . Disconnecter integrated in the cartridge.

## Accessories and spare parts

Spare parts :

- FUSADEE® cartridge code 111610 FUAKT2PT1DFI50
- FUSADEE® cartridge holder code 010208 MTADFPMX22M